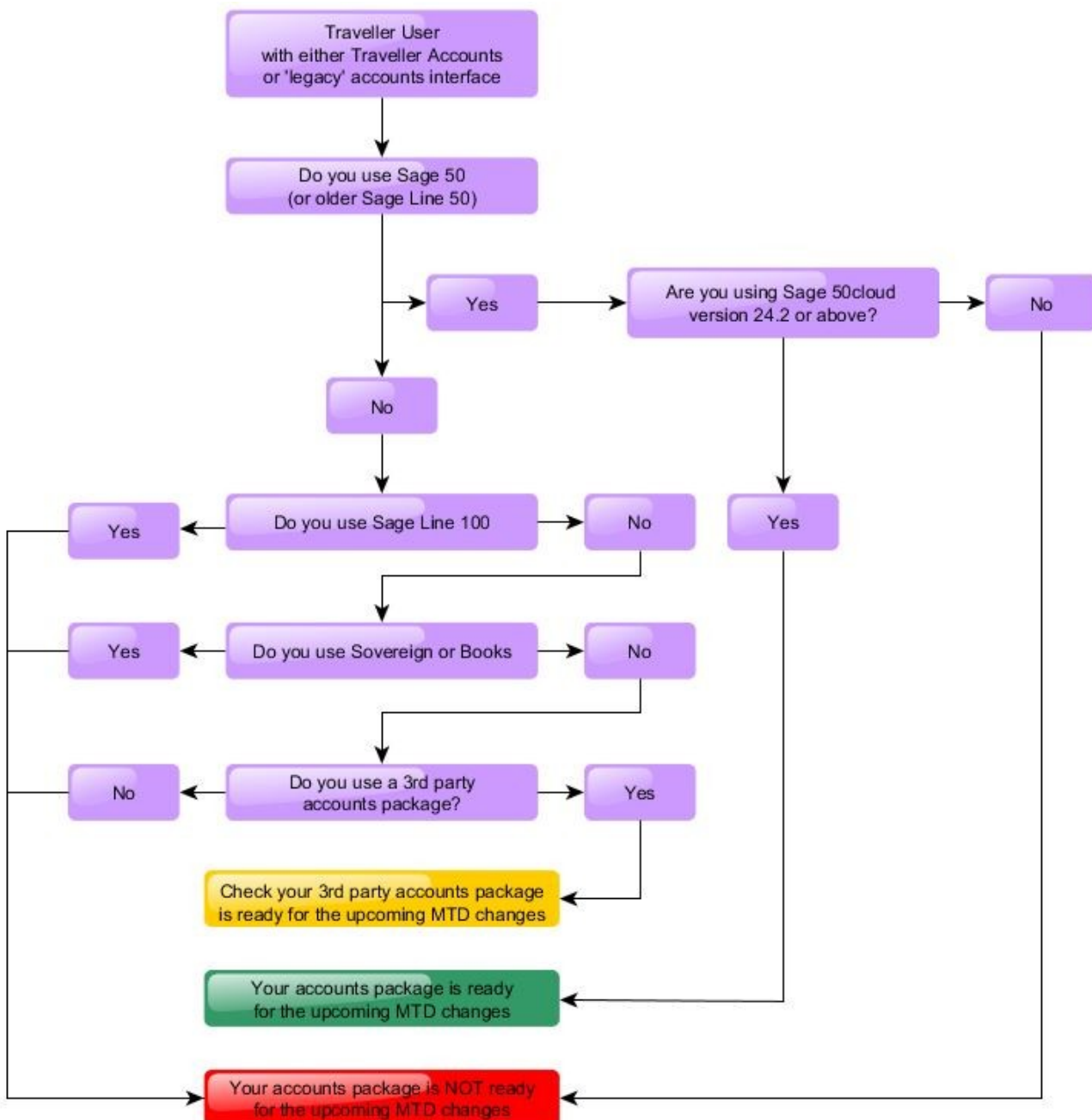


# Making Tax Digital (MTD) at a glance:

- Applies to UK users from 1 April 2019 where taxable turnover is above the VAT registration threshold (currently £85,000)
- HMRC require accounts software to be used for submissions of VAT Returns
- Submissions of VAT Returns via the HMRC gateway no longer available (where MTD applies)
- MTD applies to UK users only (ROI users are not currently involved)
- Use our flow chart shown below to check if your accounts package is ready for the upcoming MTD changes
- Check our MTD frequently asked questions to get the answers you need



# MTD frequently asked questions

## ***What do I do if my accounts package is not ready for the upcoming MTD changes ?***

If you are not using Sage 50cloud Accounts v24.2 or above you will need to follow one of the options shown below:

- Upgrade from your older version of Sage 50 (or older Sage Line 50)
- Change to Sage 50 if currently using Sage Line 100 / Sovereign / Books
- Make your own MTD arrangements, eg: use a "Bridging Solution" (see below) or check your 3rd party accounts package is ready for MTD

## ***Is there an alternative to using Sage 50cloud ?***

"Bridging Solutions" are available as an alternative to upgrading to an MTD ready accounts package See link shown below\* for HMRC list of MTD software suppliers:

<https://www.tax.service.gov.uk/making-tax-digital-software>

## ***When do the MTD rules start ?***

See link shown below\*

<https://www.gov.uk/government/publications/vat-notice-70022-making-tax-digital-for-vat/vat-notice-70022-making-tax-digital-for-vat>

2.1 .2 Find out when the Making Tax Digital rules start

## ***Why can't I continue to submit my VAT return as I do at the moment ?***

Filing direct via the HMRC gateway will not be an option from April 2019 for those that fall into the scope of MTD for VAT

From April, HMRC will no longer provide online tools for digital submissions of your VAT Returns, instead, you must submit through your accounts software.

## ***Why do SABS refer to Sage 50cloud Accounts v24.2 and not the newer v25 ?***

The latest version of Sage 50cloud that Traveller links to at the moment is Version Number 24.2.228.0

Sage 50cloud Accounts v24.2 or above is Making Tax Digital (MTD) ready, please see the Sage link shown below\*

"Is my Sage 50 Accounts compliant with Making Tax Digital?"

[ask.sage.co.uk/scripts/ask.cfg/php.exe/enduser/std\\_adp.php?p\\_faqid=41883](http://ask.sage.co.uk/scripts/ask.cfg/php.exe/enduser/std_adp.php?p_faqid=41883)

Please note: Traveller does not currently link to Sage 50cloud Accounts v25 (released by Sage in October 2018) However, we have a new version of our Traveller Accounts link going through testing

at the moment which we hope to release soon. Please bear in mind that the new version is for our Traveller Accounts link, not our legacy "Line 50 Link" which is currently under re-development and waiting for a new release date to be announced. If you are unsure which link you are using, please raise a SABS Service Desk request in the usual way so we can help you

***Does using Sage 50cloud mean that my accounts data will automatically go into the cloud ?***

No. Sage 50cloud is the name given to the newer versions of Sage 50 (previously Line 50). These contain a cloud based element called "Sage Drive". This means that you have the option of uploading a copy of your Sage data to the cloud, but you don't have to use this, ie: you would continue to use Sage with data held locally as you do at the moment. Traveller will continue to link to Sage data held locally as you do at the moment

Please note: Traveller does not link to any other Sage cloud products

***I am using Line 50 on Web Traveller. Will it be auto-updated for MTD ?***

No. You will need install a new Sage 50 on your own system. We can then move your Sage data set from Web Traveller for you and set up a link from Traveller to your new Sage so you can download your end of day files

Please raise a SABS Service Desk request in the usual way so we can assist you with this process

***I am already using Sage 50, installed on my own system, but it is an old version. How do I upgrade ?***

The latest version of Sage 50cloud that Traveller links to at the moment is Version Number 24.2.228.0

You will need to let us know when you are planning to upgrade your Sage version so we can schedule some time to upgrade your link version for you (please raise a SABS Service Desk request in the usual way)

When you have upgraded your Sage version, you will need to make sure that your SDO (Enable 3rd Party Integration) feature is still enabled. We can then log in and upgrade the link version for you. Please note: Your old link will no longer work until we have done this

Newer versions of Sage will not work on some older computers so we recommend that you check hardware requirements with your Sage supplier

***I am using Sage Line 100, Sage Sovereign or Concord Books. What do I do ?***

You will need to move to Sage 50 linked to Traveller either through Traveller Accounts or through our 'legacy' interface

Please raise a SABS Service Desk request in the usual way so we can assist you with this process

## Why doesn't my VAT Return show anything about MTD even though I am already using Sage 50cloud Accounts v24.2 or above ?

Check that MTD is turned on as shown below:

Settings > Company Preferences... > VAT (tab) > Enable Making Tax Digital for VAT submissions (tick box)

Company Preferences ✕

Sage Pay	Sage Payments	Sage 50c Microsoft Office 365	GoCardless for Sage 50			
Details	Labels	Parameters	Reporting	Accountant	Budgeting	VAT

**VAT Details**

VAT Reg

Non-Vatable Tax Code   Item VAT Amendable

VAT Scheme   Validate VAT Number

Enable Making Tax Digital for VAT submissions

If you can't see the MTD option in Company Preferences, check that the MTD feature is enabled as shown below:

Help > About > Making Tax Digital = Yes

Features Enabled	
Allow Negative Stock	No
Invoice Payments	No
Making Tax Digital	Yes

If the MTD feature is not enabled, check that your licence includes MTD as shown below:

Tools > Activation > Refresh Licence

Look for "Making Tax Digital for VAT" in the "Your licence includes the following:" list

Thank you for registering your copy of Sage 50 Accounts Professional

Your licence includes the following:

- Sage 50 Accounts Professional
- 6 users
- 5 companies
- Making Tax Digital for VAT

Also see the Sage link shown below\*

"Making Tax Digital - I can't see the Enable Making Tax Digital for VAT submissions option"  
[ask.sage.co.uk/scripts/ask.cfg/php.exe/enduser/std\\_adp.php?p\\_faqid=41888&p\\_pv=0](http://ask.sage.co.uk/scripts/ask.cfg/php.exe/enduser/std_adp.php?p_faqid=41888&p_pv=0)

**\* These are external links that have been provided to help you but please note that SABS are not responsible for the links or their contents**

SABS Traveller Support, last updated 1 March 2019